

Key Demos: PPM Fall 2020 vs Fall 2019

- Growth in the Universe is mainly M18-34, with A25-54 as a % of the Universe decreasing by close to 1%
- Sample increase, which means less weighting, but overall tuned sample decrease sharply by -9%, down -11% for A25-54
- Total Hrs down -13% with A25-54 down -22%, driven mainly by TSL

AW (Mo-Su 2a-2a)
Total Meter CTRL
Total Radio

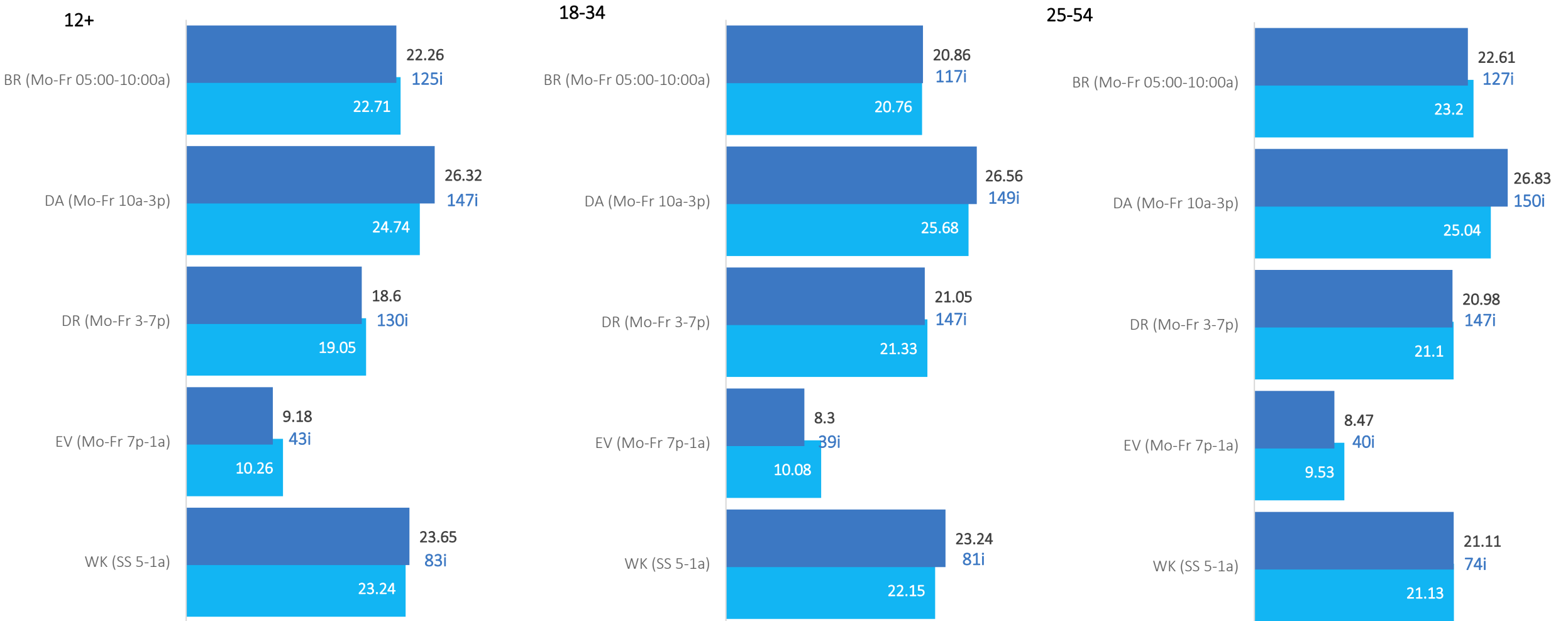
Audiences	Univ(000)			Universe%			Sample: Avg Daily			Sample % Univ:			Tuned Sample [Daily]			Tuned Sample%			TotHrsWk(000)			AvWkCume(000)			AvHoursWk(Lis)		
	Fall 2019	Fall 2020	YOY	Fall 2019	Fall 2020	YOY	Fall 2019	Fall 2020	YOY	Fall 2019	Fall 2020	YOY	Fall 2019	Fall 2020	YOY	Fall 2019	Fall 2020	YOY	Fall 2019	Fall 2020	YOY	Fall 2019	Fall 2020	YOY	Fall 2019	Fall 2020	YOY
A2+	16,334.030	16,613.028	2%	100	100	0.0	5,327	5,664	6%	33%	34%	1%	3,524	3,215	-9%	66%	57%	-9%	129,960.254	112,879.838	-13%	14,979.006	14,072.847	-6%	8.68	8.02	-8%
A18+	13,522.010	13,709.655	1%	83	83	-0.3	4,451	4,697	6%	33%	34%	1%	3,051	2,794	-8%	69%	59%	-9%	119,094.607	103,338.841	-13%	12,511.750	11,817.051	-6%	9.52	8.74	-8%
F18+	6,889.571	6,963.431	1%	42	42	-0.3	2,206	2,320	5%	32%	33%	1%	1,475	1,329	-10%	67%	57%	-10%	57,629.452	48,630.397	-16%	6,344.458	5,951.585	-6%	9.08	8.17	-10%
M18+	6,632.439	6,746.224	2%	41	41	0.0	2,244	2,377	6%	34%	35%	1%	1,576	1,465	-7%	70%	62%	-9%	61,465.155	54,708.444	-11%	6,167.291	5,865.465	-5%	9.97	9.33	-6%
A18-34	4,034.359	4,086.835	1%	25	25	-0.1	992	1,064	7%	25%	26%	1%	606	512	-16%	61%	48%	-13%	23,842.416	17,660.021	-26%	3,664.522	3,346.268	-9%	6.51	5.28	-19%
F18-34	2,000.574	1,994.977	0%	12	12	-0.2	462	489	6%	23%	25%	1%	288	241	-16%	62%	49%	-13%	12,179.569	8,342.576	-32%	1,827.616	1,658.709	-9%	6.66	5.03	-24%
M18-34	2,033.785	2,091.858	3%	12	13	0.1	530	574	8%	26%	27%	1%	318	271	-15%	60%	47%	-13%	11,662.847	9,317.445	-20%	1,836.906	1,687.559	-8%	6.35	5.52	-13%
A18-49	7,667.218	7,692.049	0%	47	46	-0.6	2,162	2,318	7%	28%	30%	2%	1,423	1,255	-12%	66%	54%	-12%	52,452.396	40,239.271	-23%	7,073.566	6,497.169	-8%	7.42	6.19	-17%
F18-49	3,830.961	3,820.444	0%	23	23	-0.4	1,040	1,105	6%	27%	29%	2%	688	596	-13%	66%	54%	-12%	25,797.347	18,855.653	-27%	3,543.374	3,244.558	-8%	7.28	5.81	-20%
M18-49	3,836.257	3,871.605	1%	23	23	-0.2	1,122	1,213	8%	29%	31%	2%	735	659	-10%	66%	54%	-11%	26,655.049	21,383.617	-20%	3,530.192	3,252.612	-8%	7.55	6.57	-13%
A25-54	7,312.154	7,300.934	0%	45	44	-0.8	2,219	2,354	6%	30%	32%	2%	1,535	1,369	-11%	69%	58%	-11%	57,480.514	44,778.156	-22%	6,826.572	6,319.056	-7%	8.42	7.09	-16%
F25-54	3,673.867	3,657.321	0%	22	22	-0.5	1,081	1,145	6%	29%	31%	2%	738	652	-12%	68%	57%	-11%	26,753.819	20,443.835	-24%	3,419.160	3,144.701	-8%	7.82	6.5	-17%
M25-54	3,638.287	3,643.614	0%	22	22	-0.3	1,138	1,209	6%	31%	33%	2%	797	717	-10%	70%	59%	-11%	30,726.695	24,334.322	-21%	3,407.413	3,174.355	-7%	9.02	7.67	-15%

Fall 2019: 2019-08-26 to 2019-11-24

Fall 2020: 2020-08-31 to 2020-11-29

Daypart Trending M-Su 5a-1a: Contribution %

Index to % of hours for daypart ie BR = 25 hours out of 140 hours/week



■ Fall 2020: 2020-08-31 to 2020-11-29

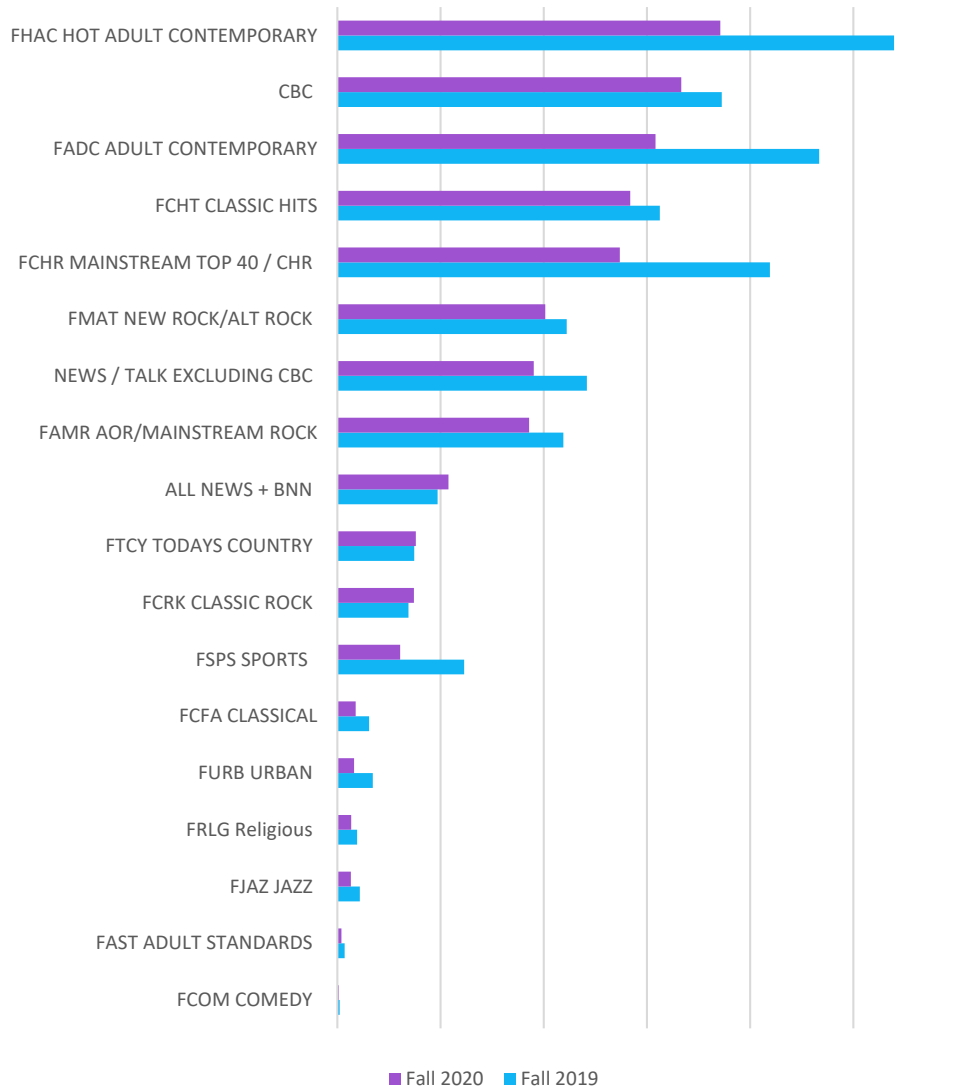
■ Fall 2019: 2019-08-26 to 2019-11-24

SOURCE: PPM NUMERIS / TOTAL METER / M-SU 5A-1A / AMA

A25-54											Toronto				Calgary							
Total Metro CTRL											Montreal				Edmonton							
AW (Mo-Su 2a-2a)											Vancouver											
Fall 2019: Aug 26 - Nov 24 2019											Fall 2020: Aug 31 - Nov 29 2020											
2019 Rank	2020 Rank	Diff.	Stations	Shr%	AMA(000)	AvWkCume(000)	AvHoursWk(Lis)	Shr%	AMA(000)	AvWkCume(000)	AvHoursWk(Lis)	Shr%	AMA(000)	AvWkCume(000)	AvHoursWk(Lis)	Shr%	AMA(000)	AvWkCume(000)	AvHoursWk(Lis)			
Total Radio											100	342.146	6826.572	8.42	100	266.537	6319.056	7.09	0.00	-22%	-7%	-16%
1	1	0	CBLAFM	4.48	15.325	443.577	5.8	4.43	11.815	375.639	5.28	-0.05	-23%	-15%	-9%							
10	2	8	CKMFFM	2.57	8.794	628.024	2.35	3.7	9.849	515.019	3.21	1.13	12%	-18%	37%							
7	3	4	CHBMFM	3.18	10.892	965.798	1.89	3.46	9.222	726.682	2.13	0.28	-15%	-25%	13%							
11	4	7	CILQFM	2.51	8.596	650.125	2.22	3.45	9.206	462.343	3.35	0.94	7%	-29%	51%							
17	5	12	CBF FM	1.88	6.415	324.34	3.32	3.31	8.83	312.207	4.75	1.43	38%	-4%	43%							
9	6	3	CHMPFM	2.82	9.652	614.785	2.64	3.26	8.691	491.938	2.97	0.44	-10%	-20%	13%							
6	7	-1	CKBFFM	3.31	11.324	672.881	2.18	3.19	8.51	632.1	2.26	-0.12	-25%	-28%	4%							
4	8	-4	CFGLFM	3.46	11.834	903.681	2.2	3.11	8.285	608.544	2.29	-0.35	-30%	-33%	4%							
3	9	-6	CHFIFM	3.67	12.551	1355.431	1.56	2.91	7.756	845.48	1.54	-0.76	-38%	-38%	-1%							
12	10	2	CKOIFM	2.38	8.151	811.699	1.69	2.78	7.42	623.236	2	0.40	-9%	-23%	18%							
5	11	-6	CITEFM	3.41	11.67	652.819	3	2.68	7.136	435.335	2.75	-0.73	-39%	-33%	-8%							
16	12	4	CFTR	1.89	6.469	539.904	2.01	2.6	6.939	577.988	2.02	0.71	7%	7%	0%							
13	13	0	CHOMFM	2.27	7.783	616.872	2.12	2.06	5.5	468.119	1.97	-0.21	-29%	-24%	-7%							
2	14	-12	CHUMFM	4.27	14.602	1005.586	2.44	2.01	5.35	692.095	1.3	-2.26	-63%	-31%	-47%							
22	15	7	CINDFM	1.24	4.257	377.327	1.9	1.93	5.147	273.305	3.16	0.69	21%	-28%	66%							
14	16	-2	CJFMFM	2.14	7.339	782.501	1.58	1.86	4.966	599.011	1.39	-0.28	-32%	-23%	-12%							
15	17	-2	CKISFM	2.12	7.237	749.673	1.62	1.72	4.592	588.913	1.31	-0.40	-37%	-21%	-19%							
26	18	8	CFMIFM	1.05	3.582	318.243	1.89	1.61	4.283	262.161	2.74	0.56	20%	-18%	45%							
8	19	-11	CKMFFM	3.03	10.361	1139.755	1.53	1.54	4.11	791.005	0.87	-1.49	-60%	-31%	-43%							
18	20	-2	CFOXFM	1.42	4.86	250.111	3.26	1.47	3.914	218.112	3.01	0.05	-19%	-13%	-8%							
42	21	21	CJIRFM	0.68	2.31	192.387	2.02	1.37	3.664	184.932	3.33	0.69	59%	-4%	65%							
19	22	-3	CFNYFM	1.38	4.717	510.584	1.55	1.37	3.648	446.217	1.37	-0.01	-23%	-13%	-12%							
21	23	-2	CIDCFM	1.25	4.288	533.094	1.35	1.27	3.383	409.497	1.39	0.02	-21%	-23%	3%							
24	24	0	CKNOFM	1.11	3.796	284.357	2.24	1.25	3.34	221.553	2.53	0.14	-12%	-22%	13%							
35	25	10	CKZZFM	0.8	2.728	394.733	1.16	1.23	3.274	316.345	1.74	0.43	20%	-20%	50%							
23	26	-3	CHDIFM	1.12	3.832	208.452	3.09	1.18	3.144	157.39	3.36	0.06	-18%	-24%	9%							
28	27	1	CFBTFM	1.01	3.451	432.067	1.34	1.17	3.125	381.348	1.38	0.16	-9%	-12%	3%							
40	28	12	CKCEFM	0.7	2.396	210.326	1.91	1.11	2.949	176.319	2.81	0.41	23%	-16%	47%							
20	29	-9	CHQMFM	1.37	4.699	497.888	1.59	1.09	2.902	344.226	1.42	-0.28	-38%	-31%	-11%							
27	30	-3	CJAXFM	1.04	3.55	377.512	1.58	1.05	2.805	308.922	1.53	0.01	-21%	-18%	-3%							
38	31	7	CBL FM	0.72	2.45	252.239	1.63	0.97	2.583	270.286	1.61	0.25	5%	7%	-1%							
30	32	-2	CKNW	0.95	3.238	120.197	4.53	0.97	2.576	99.873	4.33	0.02	-20%	-17%	-4%							
54	33	21	CKPKFM	0.54	1.838	181.053	1.71	0.92	2.464	175.304	2.36	0.38	34%	-3%	38%							
25	34	-9	CFRB	1.06	3.641	161.127	3.8	0.91	2.428	154.129	2.65	-0.15	-33%	-4%	-30%							
68	35	33	CKWX	0.45	1.546	174.897	1.48	0.84	2.233	142.354	2.64	0.39	44%	-19%	78%							
102	36	66	CJPFM	0	0	0		0.83	2.215	195.985	1.9	0.83										
51	37	14	CIRKFM	0.58	1.986	135.471	2.46	0.82	2.196	138.495	2.66	0.24	11%	2%	8%							
29	38	-9	CFBRFM	1	3.412	197.457	2.9	0.76	2.026	154.431	2.2	-0.24	-41%	-22%	-24%							
48	39	9	CHBNFM	0.6	2.039	199.105	1.72	0.73	1.948	165.216	1.98	0.13	-4%	-17%	15%							
44	40	4	CBU+	0.64	2.189	174.908	2.1	0.72	1.931	173.582	1.87	0.08	-12%	-1%	-11%							

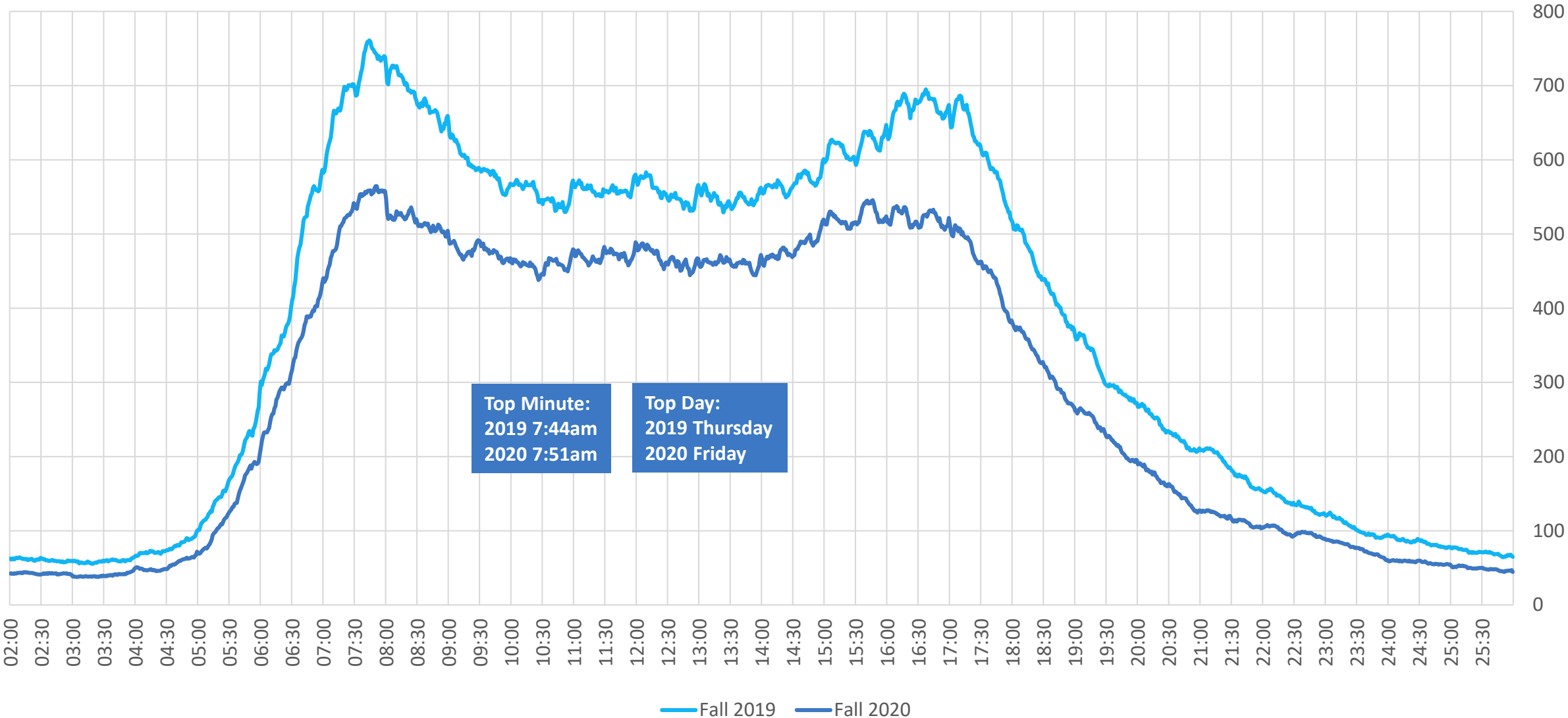
2019 Rank	2020 Rank	Diff.	Stations	Shr%	AMA(000)	AvWkCume(000)	AvHoursWk(Lis)	Shr%	AMA(000)	AvWkCume(000)	AvHoursWk(Lis)	Shr%	AMA(000)	AvWkCume(000)	AvHoursWk(Lis)	Shr%	AMA(000)	AvWkCume(000)	AvHoursWk(Lis)
33	41	-8	CJAD	0.86	2.944	106.98	4.62	0.71	1.895	88.752	3.59	-0.15	-36%	-17%	-22%				
47	42	5	CJAYFM	0.62	2.109	185.231	1.91	0.7	1.853	151.262	2.06	0.08	-12%	-18%	8%				
36	43	-7	CFEJFM	0.79	2.715	196.347	2.32	0.69	1.836	156.111	1.98	-0.10	-32%	-20%	-15%				
51	44	7	CJUPFM	0.58	1.998	192.194	1.75	0.68	1.817	149.982	2.04	0.10	-9%	-22%	17%				
32	45	-13	CFMZ+	0.9	3.085	233.212	2.22	0.67	1.782	147.843	2.02	-0.23	-42%	-37%	-9%				
48	46	2	CKKSFM	0.6	2.037	277.623	1.23	0.66	1.76	206.126	1.43	0.06	-14%	-26%	16%				
60	47	13	CKMPFM	0.47	1.617	197.446	1.38	0.62	1.655	151.895	1.83	0.15	2%	-23%	33%				
56	48	8	CKEAFM	0.52	1.794	124.338	2.42	0.61	1.631	120.33	2.28	0.09	-9%	-3%	-6%				
38	49	-11	CFXLFM	0.72	2.48	183.723	2.27	0.6	1.595	126.021	2.13	-0.12	-36%	-31%	-6%				
46	50	-4	CHFMFM	0.63	2.169	222.293	1.64	0.55	1.476	152.813	1.62	-0.08	-32%	-31%	-1%				
58	51	7	CJAOFM	0.51	1.742	193.475	1.51	0.55	1.468	140.685	1.75	0.04	-16%	-27%	16%				
64	52	12	CISNFM	0.46	1.57	152.275	1.73	0.55	1.454	117.007	2.09	0.09	-7%	-23%	21%				
64	53	11	CBR	0.46	1.57	103.676	2.54	0.54	1.427	93.729	2.56	0.08	-9%	-10%	1%				
42	54	-12	CHUPFM	0.68	2.317	211.019	1.84	0.54	1.426	136.135	1.76	-0.14	-38%	-35%	-4%				
76	55	21	CBFXFM	0.37	1.258	155.728	1.36	0.53	1.41	137.85	1.72	0.16	12%	-11%	26%				
37	56	-19	CICL	0.74	2.548	181.124	2.36	0.51	1.372	133.993	1.72	-0.23	-46%	-26%	-27%				
72	57	15	CKGM	0.42	1.449	80.084	3.04	0.51	1.361	48.168	4.75	0.09	-6%	-40%	56%				
53	58	-5	CKWZFM	0.56	1.915	89.839	3.58	0.5	1.345	72.645	3.11	-0.06	-30%	-19%	-13%				
60	59	1	CFMJ	0.47	1.613	124.769	2.17	0.49	1.308	105.636	2.08	0.02	-19%	-15%	-4%				
44	60	-16	CIRTFM	0.64	2.184	155.353	2.36	0.49	1.306	98.633	2.23	-0.15	-40%	-37%	-6%				
60	61	-1	CKRAFM	0.47	1.599	209.769	1.28	0.49	1.293	157.492	1.38	0.02	-19%	-25%	8%				
55	62	-7	CKWDFM	0.53	1.799	121.587	2.49	0.48	1.291	94.534	2.29	-0.05	-28%	-22%	-8%				
60	63	-3	CBR FM	0.47	1.615	57.325	4.73	0.48	1.29	40.063	5.41	0.01	-20%	-30%	14%				
64	64	0	CKPWFM	0.46	1.561	181.014	1.45	0.47	1.263	136.452	1.55	0.01	-19%	-25%	7%				
72	65	7	CHOR	0.42	1.447	70.483	3.45	0.47	1.249	60.718	3.46	0.05	-14%	-14%	0%				
69	66	3	CINGFM	0.44	1.517	209.879	1.21	0.45	1.202	160.764	1.26	0.01	-21%	-23%	4%				
56	67	-11	CKRYFM	0.52	1.78	155.654	1.92	0.45	1.194	113.349	1.77	-0.07	-33%	-27%	-8%				
79	68	11	CHLGM	0.36	1.246	213.647	0.98	0.44	1.166	171.296	1.14	0.08	-6%	-20%	16%				
40	69	-29	CFJUFM	0.7	2.396	440.064	0.91	0.43	1.138	292.489	0.65	-0.27	-53%	-34%	-29%				
76	70	6	CBX+	0.37	1.264	79.767	2.66	0.43	1.137	70.914	2.69	0.06	-10%	-11%	1%				
80	71	9	CKST	0.33	1.146	109.361	1.76	0.39	1.047	73.01	2.41	0.06	-9%	-33%	37%				
84	72	12	CKNGFM	0.28	0.958	169.925	0.95	0.35	0.946	124.893	1.27	0.07	-1%	-27%	34%				
75	73	2	CFGQFM	0.39	1.326	139.004	1.6	0.35	0.938	107.04	1.47	-0.04	-29%	-23%	-8%				
85	74	11	CFFR	0.27	0.92	95.927	1.61	0.35	0.932	83.111	1.88	0.08	1%	-13%	17%				
48	75	-27	CIBKFM	0.6	2.061	262.41	1.32	0.35	0.93	178.163	0.88	-0.25	-55%	-32%	-33%				
64	76	-12	CKUAFM	0.46	1.568	80.384	3.28	0.34	0.911	55.231	2.77	-0.12	-42%	-31%	-16%				
30	77	-47	CKDXFM	0.95	3.261	112.977	4.85	0.33	0.89	62.726	2.38	-0.62	-73%	-44%	-51%				
72	78	-6	CFMGFM	0.42	1.446	191.032	1.27	0.31	0.836	137.381	1.02	-0.11	-42%	-28%	-20%				
69	79	-10	CHED	0.44	1.52	99.979	2.55	0.3	0.809	68.234	1.99	-0.14	-47%	-32%	-22%				
76	80	-4	CBMEFM	0.37	1.25	86.912	2.42	0.3	0.792	70.965	1.87	-0.07	-37%	-18%	-23%				
69	81	-12	CHUM	0.44	1.52	123.953	2.06	0.23	0.621	91.732	1.14	-0.21	-59%	-26%	-45%				
34	82	-48	CKLXFM	0.84	2.884	163.479</													

Fall 2020 YOY PPM Format Trending: A25-54



		A25-54								YOY			
		AW (Mo-Su 2a-2a)											
		Total Meter CTRL											
		FALL 2019: 2019-08-26 to 2019-11-24				Fall 2020: 2020-08-31 to 2020-11-29							
	# Stations	Shr%	AMA(000)	AvWkCum e(000)	AvHoursWk(Lis)	Shr%	AMA(000)	AvWkCum e(000)	AvHoursWk(Lis)	Shr%	AMA(000)	AvWkCum e(000)	AvHoursWk(Lis)
Total Radio	100		342.146	6826.572	8.42	100	266.537	6319.056	7.09		-22%	-7%	-16%
FHAC HOT ADULT CONTEMPORARY	8	15.8	53.948	3286.917	2.76	13.9	37.104	2492.548	2.5	-1.85	-31%	-24%	-9%
CBC	17	10.9	37.246	1594.755	3.92	12.5	33.317	1478.437	3.79	1.61	-11%	-7%	-3%
FADC ADULT CONTEMPORARY	12	13.7	46.691	3722.35	2.11	11.6	30.824	2578.865	2.01	-2.09	-34%	-31%	-5%
FCHT CLASSIC HITS	7	9.13	31.25	2527.243	2.08	10.7	28.386	1986.717	2.4	1.52	-9%	-21%	15%
FCHR MAINSTREAM TOP 40 / CHR	11	12.3	41.918	3472.456	2.03	10.3	27.378	2723.31	1.69	-1.98	-35%	-22%	-17%
FMAT NEW ROCK/ALT ROCK	6	6.49	22.22	1411.891	2.64	7.56	20.152	1221.624	2.77	1.07	-9%	-13%	5%
NEWS / TALK EXCLUDING CBC	8	7.07	24.186	1278.649	3.18	7.14	19.03	1040.393	3.07	0.07	-21%	-19%	-3%
FAMR AOR/MAINSTREAM ROCK	4	6.4	21.9	1646.358	2.23	6.97	18.586	1233.08	2.53	0.57	-15%	-25%	13%
ALL NEWS + BNN	6	2.84	9.716	956.035	1.71	4.04	10.771	921.78	1.96	1.20	11%	-4%	15%
FTCY TODAYS COUNTRY	4	2.18	7.459	553.559	2.26	2.85	7.601	464.392	2.75	0.67	2%	-16%	22%
FCRK CLASSIC ROCK	3	2.01	6.894	591.751	1.96	2.78	7.417	507.029	2.46	0.77	8%	-14%	26%
FSPS SPORTS	8	3.59	12.288	710.045	2.91	2.29	6.092	444.065	2.3	-1.30	-50%	-37%	-21%
FCFA CLASSICAL	1	0.9	3.085	233.212	2.22	0.67	1.782	147.843	2.02	-0.23	-42%	-37%	-9%
FURB URBAN	2	1	3.438	528.353	1.09	0.61	1.629	353.549	0.77	-0.39	-53%	-33%	-29%
FRLG Religious	1	0.56	1.915	89.839	3.58	0.5	1.345	72.645	3.11	-0.06	-30%	-19%	-13%
FJAZ JAZZ	1	0.64	2.184	155.353	2.36	0.49	1.306	98.633	2.23	-0.15	-40%	-37%	-6%
FAST ADULT STANDARDS	1	0.21	0.716	69.169	1.74	0.15	0.393	53.105	1.24	-0.06	-45%	-23%	-29%
FCOM COMEDY	1	0.07	0.227	26.529	1.44	0.05	0.135	18.408	1.23	-0.02	-41%	-31%	-15%

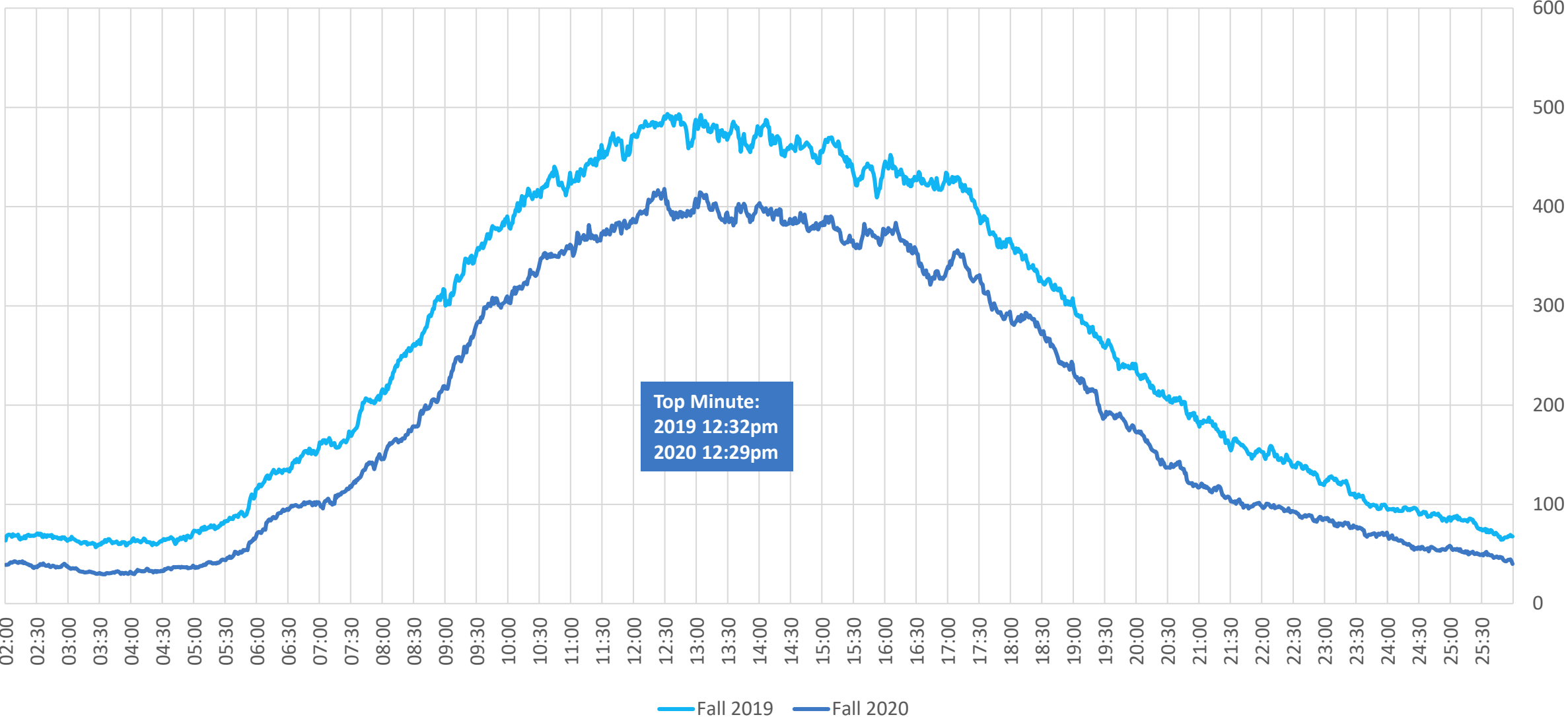
A25-54: Listening Curve Fall 2020vs Fall 2019 M-F 2a-2a



SOURCE: PPM NUMERIS / AMA / TOTAL METER CTRL



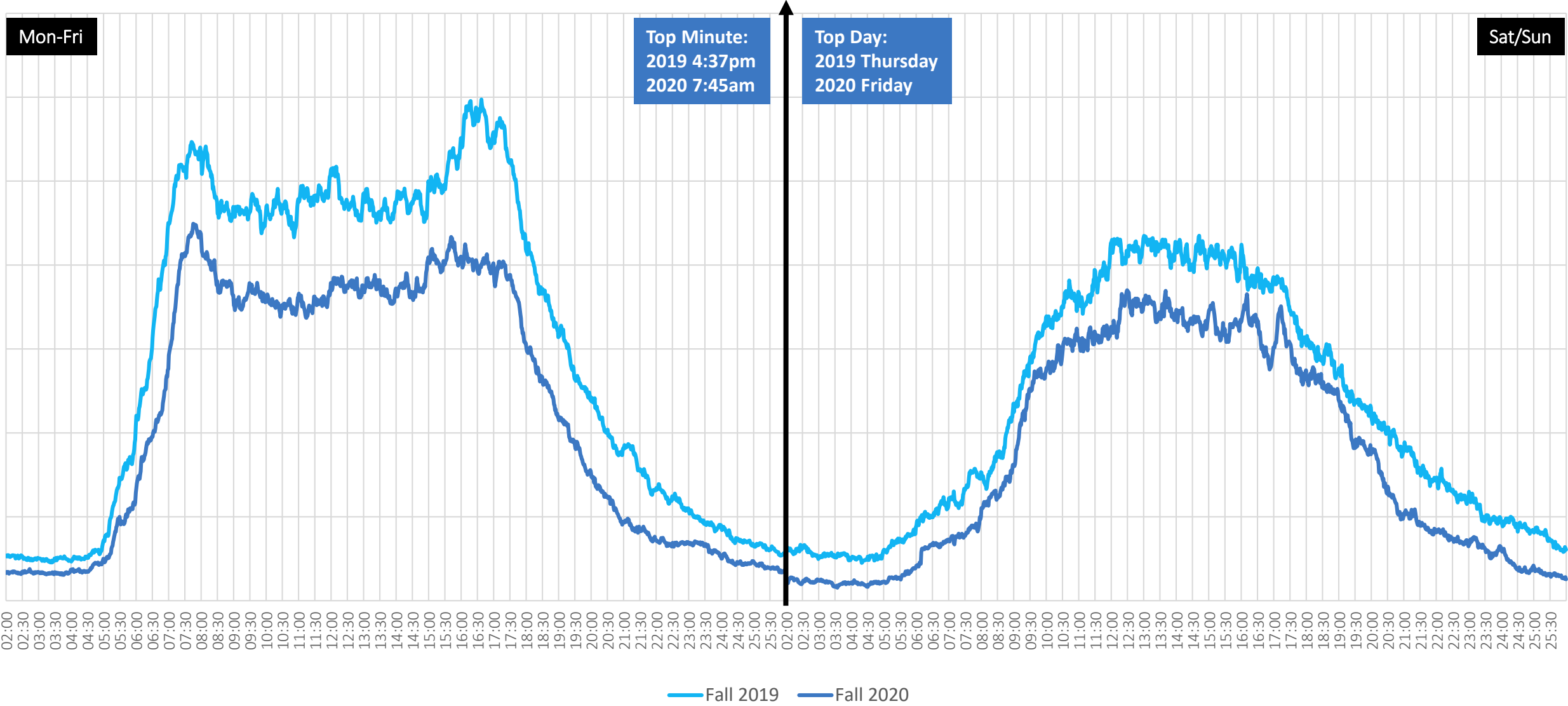
A25-54: Listening Curve Fall 2020vs Fall 2019 S/S 2a-2a



SOURCE: PPM NUMERIS / AMA / TOTAL METER CTRL



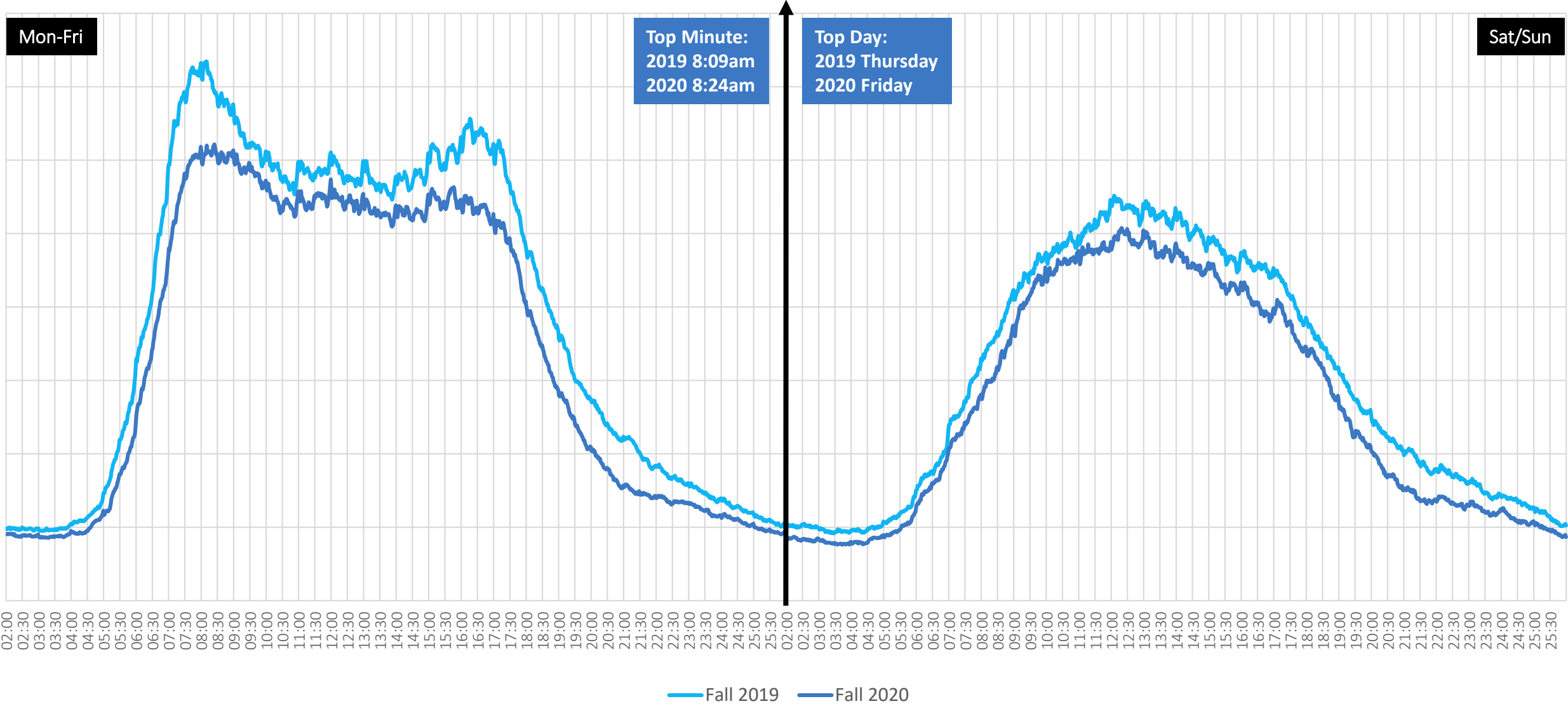
A18-34: Listening Curve Fall 2020vs Fall 2019



SOURCE: PPM NUMERIS / AMA / TOTAL METER CTRL



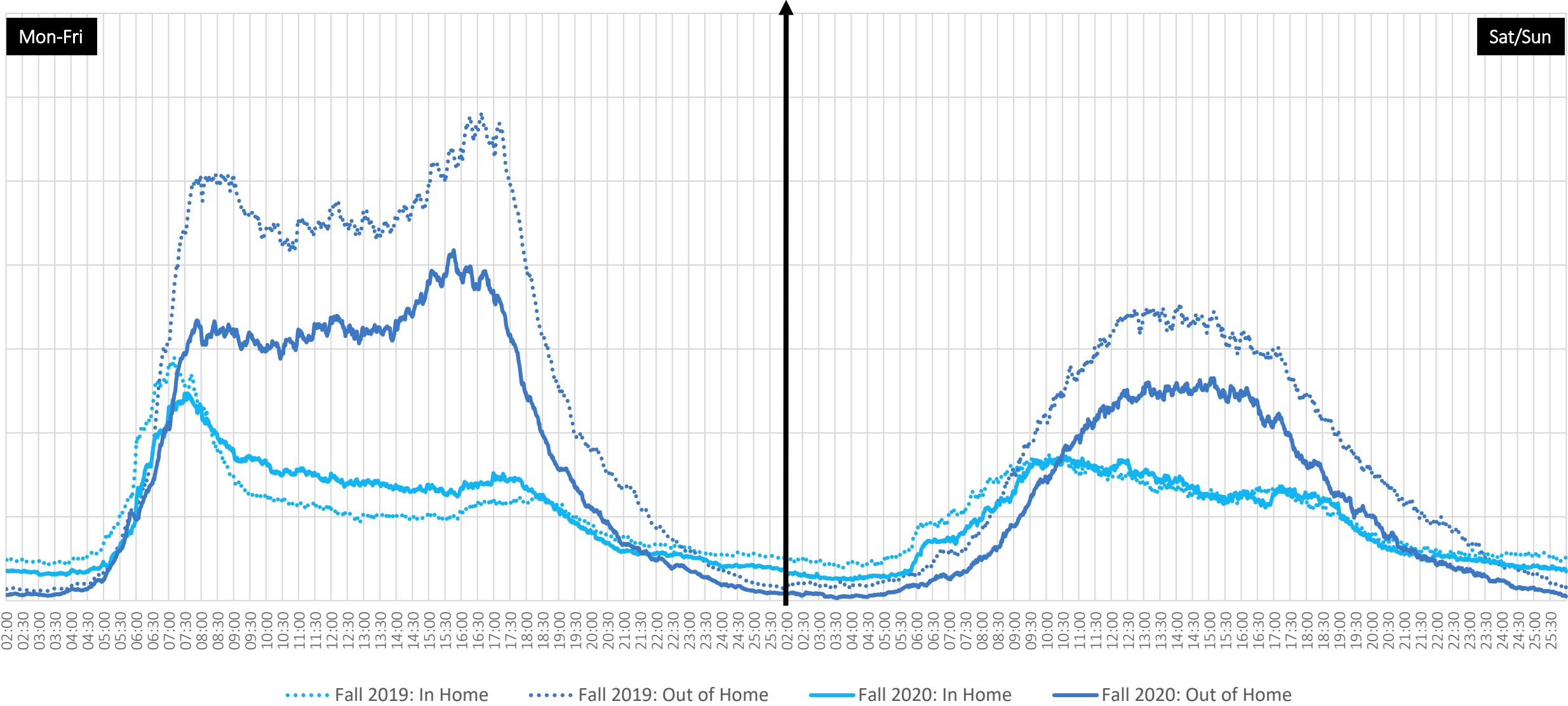
A12+: Listening Curve Fall 2020vs Fall 2019



SOURCE: PPM NUMERIS / AMA / TOTAL METER CTRL



A25-54: Listening Curve Fall 2020vs Fall 2019: In/ Out Home

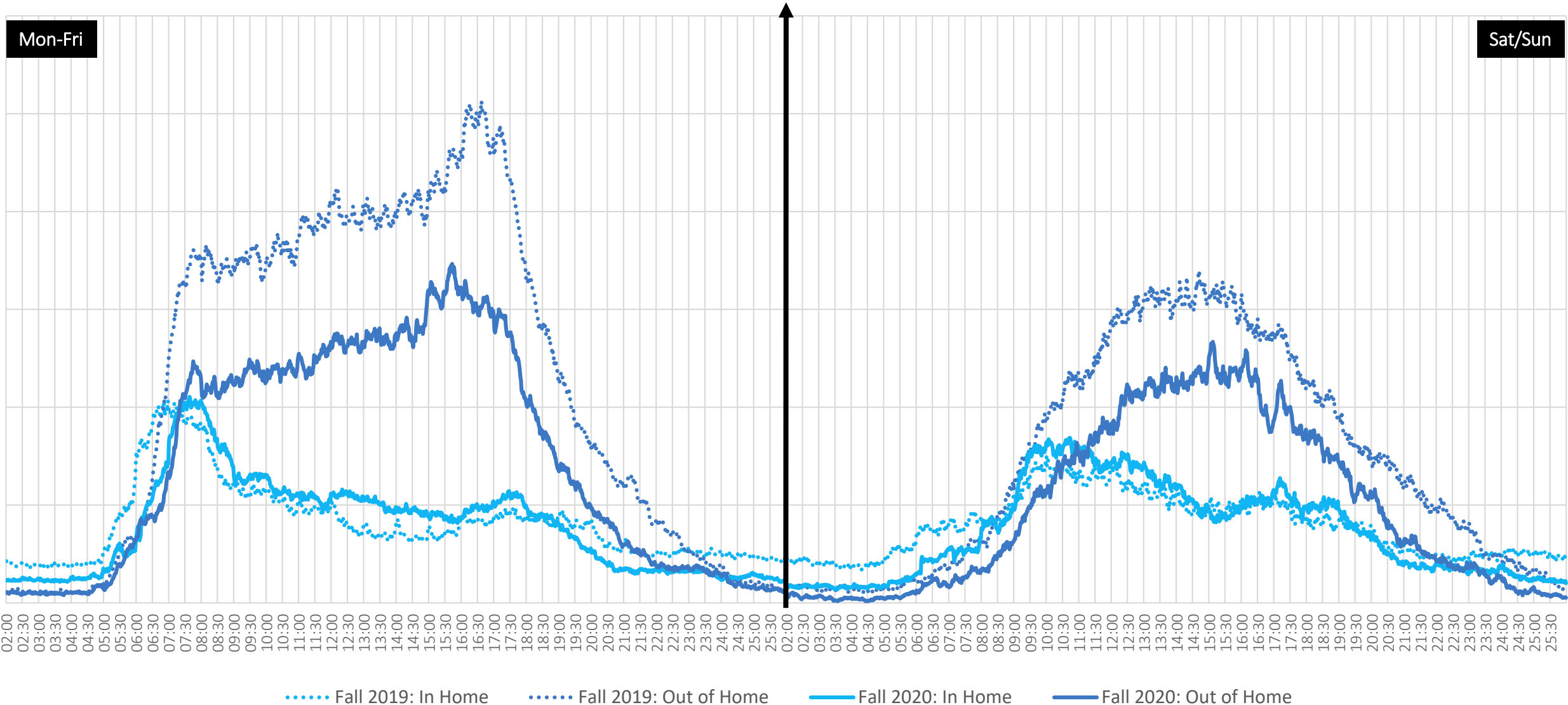


..... Fall 2019: In Home
 Fall 2019: Out of Home
 ———— Fall 2020: In Home
 ———— Fall 2020: Out of Home

SOURCE: PPM NUMERIS / AMA / TOTAL METER CTRL



A18-34: Listening Curve Fall 2020vs Fall 2019: In/ Out Home



Mon-Fri

Sat/Sun

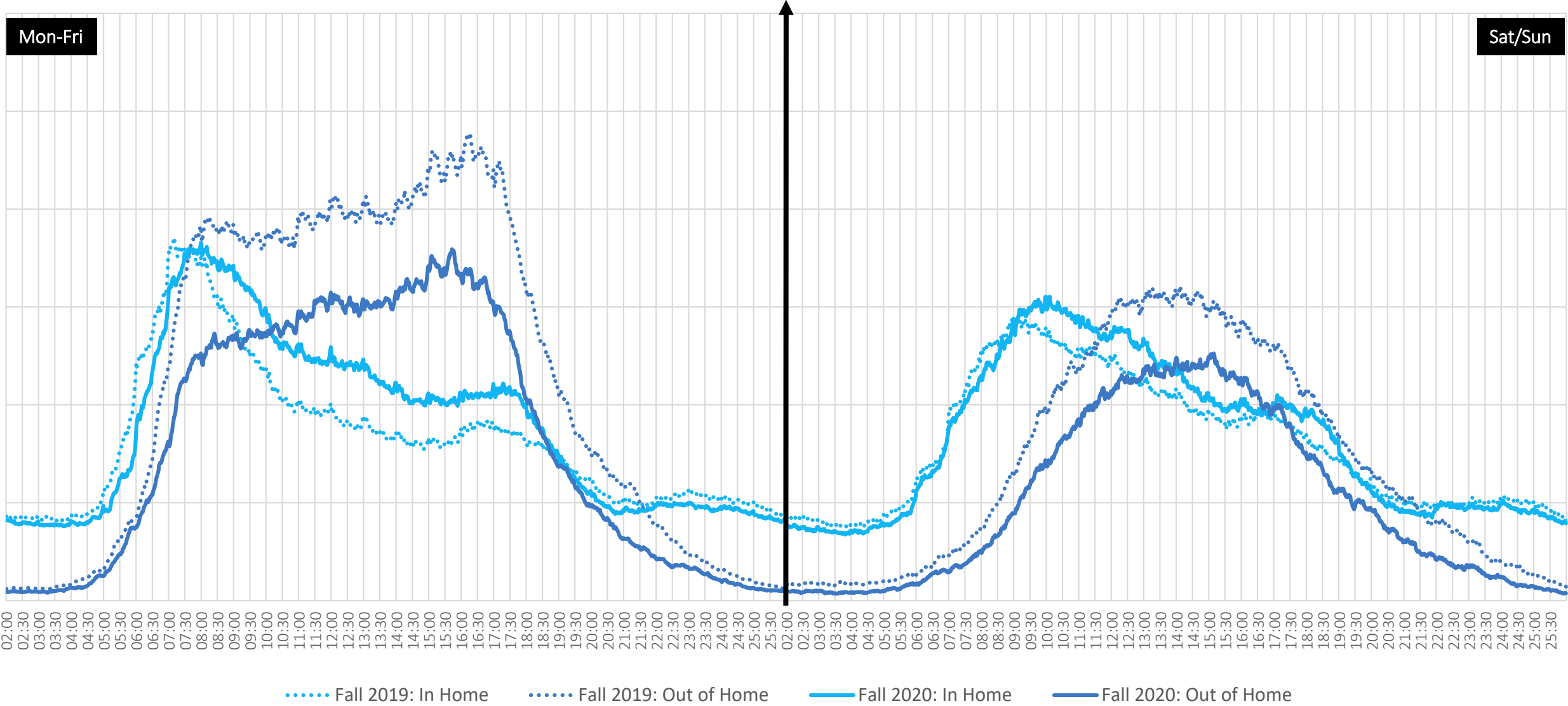
02:00 02:30 03:00 03:30 04:00 04:30 05:00 05:30 06:00 06:30 07:00 07:30 08:00 08:30 09:00 09:30 10:00 10:30 11:00 11:30 12:00 12:30 13:00 13:30 14:00 14:30 15:00 15:30 16:00 16:30 17:00 17:30 18:00 18:30 19:00 19:30 20:00 20:30 21:00 21:30 22:00 22:30 23:00 23:30 24:00 24:30 25:00 25:30

..... Fall 2019: In Home Fall 2019: Out of Home — Fall 2020: In Home — Fall 2020: Out of Home

SOURCE: PPM NUMERIS / AMA / TOTAL METER CTRL



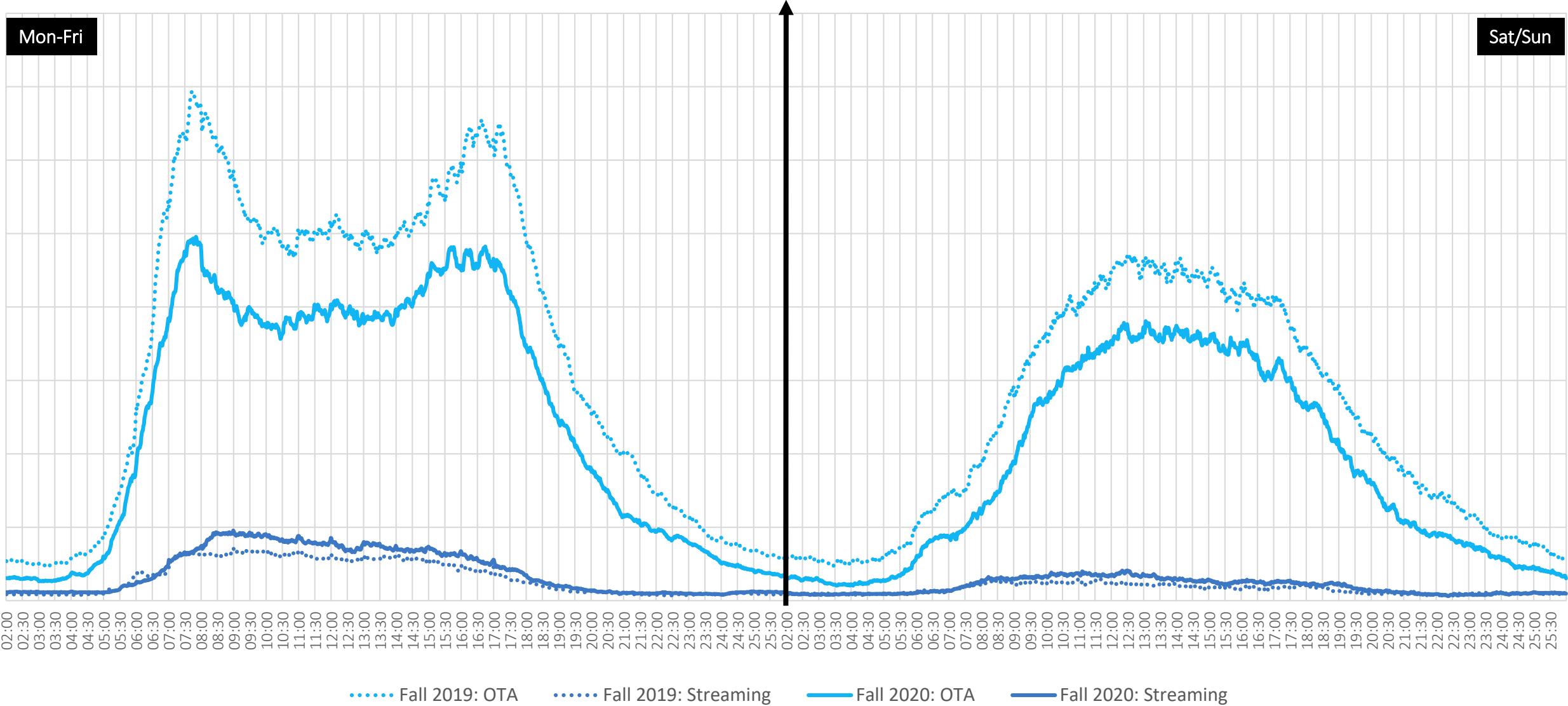
A12+: Listening Curve Fall 2020vs Fall 2019: In/ Out Home



SOURCE: PPM NUMERIS / AMA / TOTAL METER CTRL



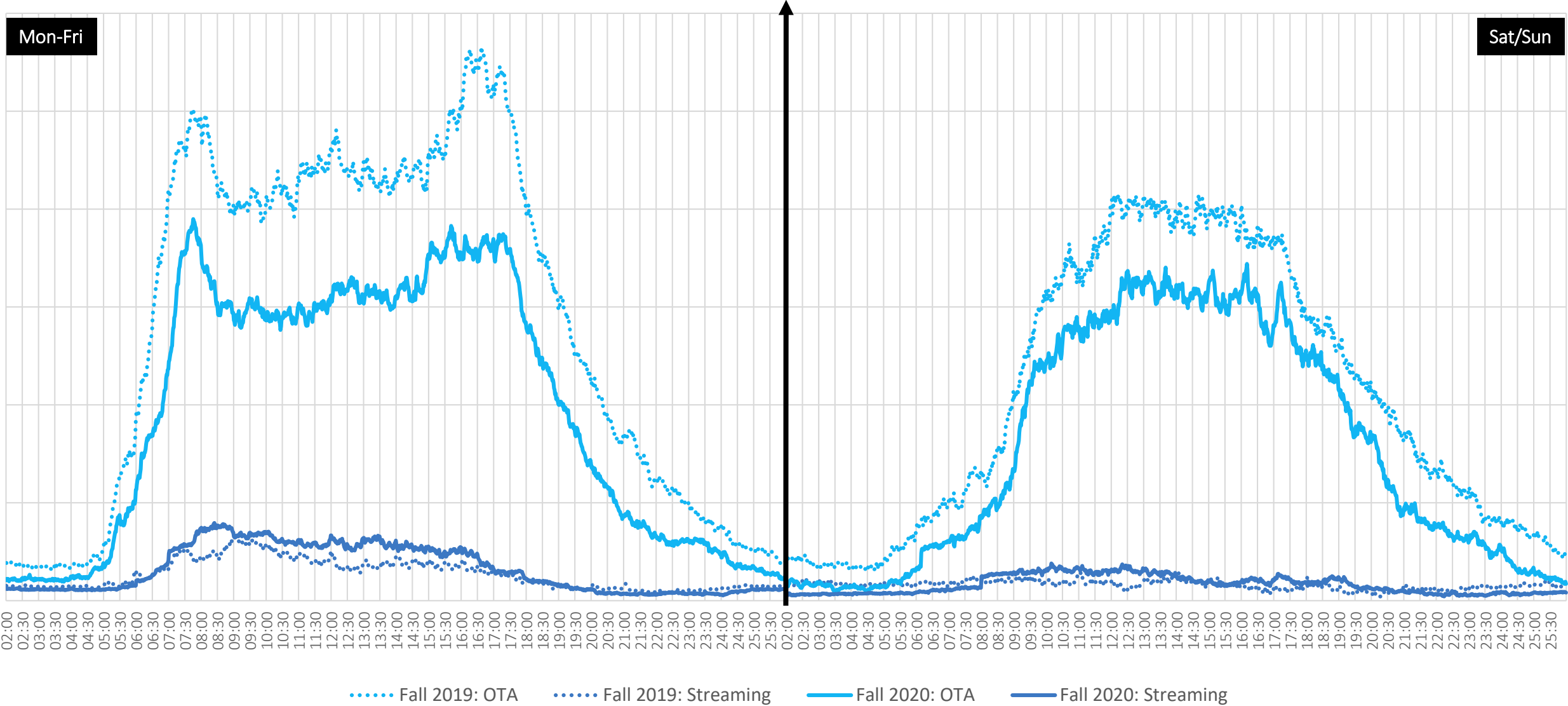
A25-54: Listening Curve Fall 2020vs Fall 2019: OTA /Streaming



SOURCE: PPM NUMERIS / AMA / TOTAL METER CTRL



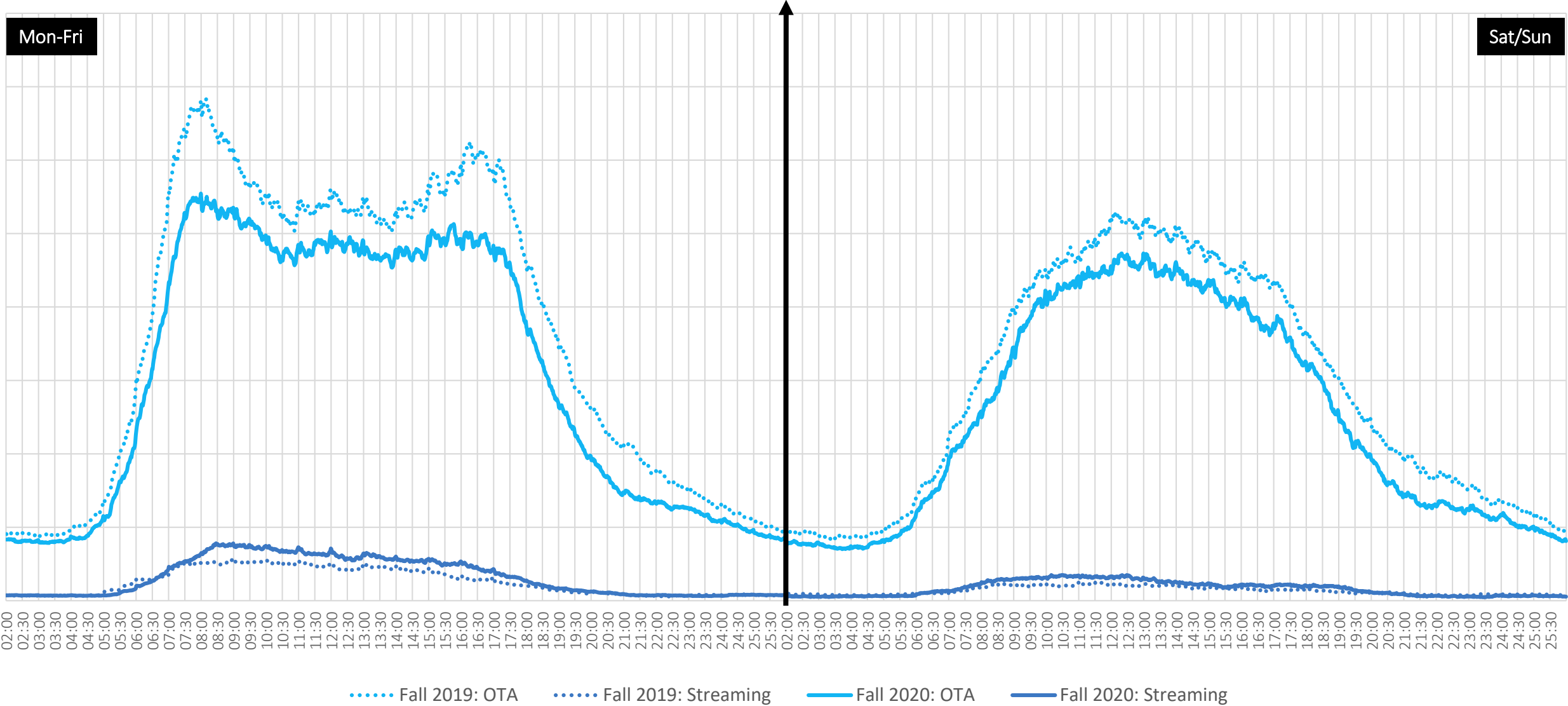
A18-34: Listening Curve Fall 2020vs Fall 2019: OTA /Streaming



SOURCE: PPM NUMERIS / AMA / TOTAL METER CTRL



A12+: Listening Curve Fall 2020vs Fall 2019: OTA /Streaming

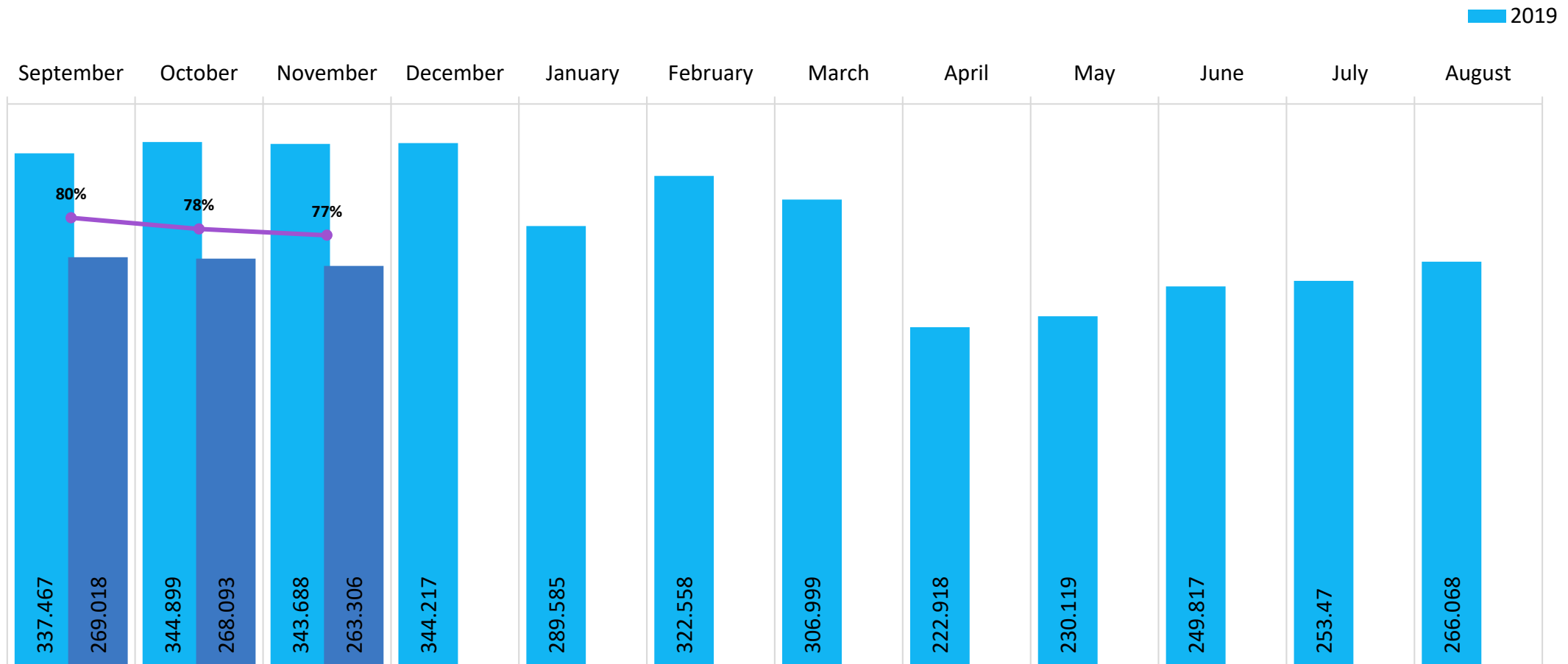


SOURCE: PPM NUMERIS / AMA / TOTAL METER CTRL

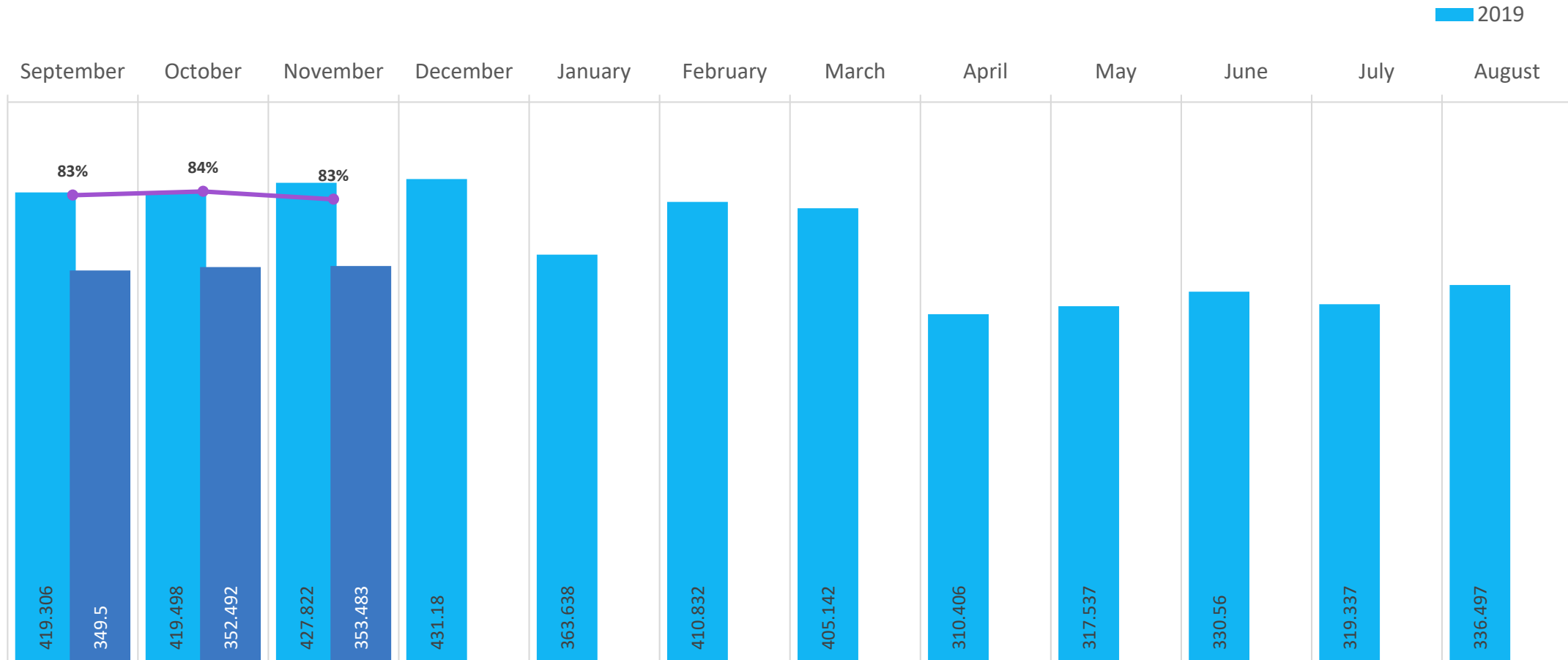


25-54 AMA Trend

M-Su 2a-2a Total Meter CTRL



Working +30 Hrs/ Week AMA Trend M-F 2a-2a Total Meter CTRL



OMP AMA Trend

M-Su 2a-2a Total Meter CTRL

